



Gylling Data Management, Inc.

Providing Research Software Solutions Since 1982!

405 Martin Boulevard, Brookings, SD 57006

GDM.ARM.Support@gdmdata.com www.gdmdata.com Office: 605-692-4021

June, 2015

Vol. 1, Issue 2

Staying Current Newsletter Tips to keep in the Top Quartile

Newsletter

Thank you for taking the time to read through our inaugural newsletter, published in March. We will publish newsletters every quarter with current topics and tips. Previous versions can be located on our website here:

<http://gdmdata.com/Resources/Newsletters>.

Please contact us at GDM.ARM.Support@gdmdata.com with questions and suggestions.



Other topics in this newsletter:

'Check for Updates' to keep current	1
Need room to write in a printed Site Description Report?	2
Data Quality checking tools	3
Attaching pictures in Assessment Data	5
Use Study List to help with File Management	6
Use 'Send To' for exchanging data	7
Meeting Calendar	7
Did you know?	8
Still time to upgrade to ARM 2015	9
ARM 8 End of Support	9

'Check for Updates' to keep current

Run the 'Check for Updates' (**Help - Check for Updates**) often to keep your ARM 2015 on the most current version. Issue fixes and all enhancements are distributed via 'Check for Updates'.

Please visit our website for the latest information on updates made to ARM 2015 here:

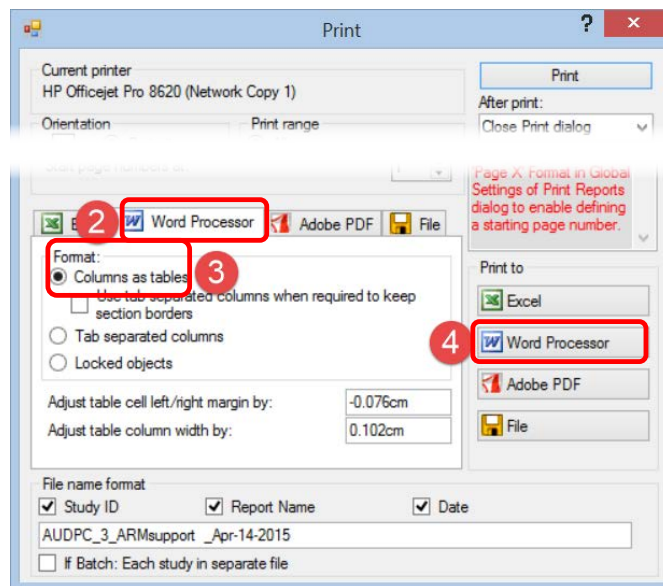
http://gdmdata.com/media/documents/ARM_Change_Log.txt. Check back often for more updates.

Need room to write in a printed Site Description Report?

Thanks to a client for asking this question: How can I print an **empty Site Description** report with enough room to hand write? The **solution** is printing the ARM report to Word, and then setting line spacing to Double. Here are the steps:

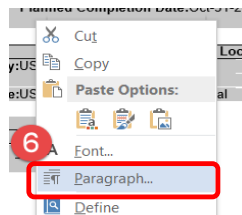
ARM:

1. Open a newly created trial, which will contain only information that was defined in the description section of the protocol used to create the trial. Then, select File - Print Reports and set up the report options as desired; Click 'Next' to view the Print dialog.
2. Select the 'Word Processor' tab in the Print options.
3. Make sure that 'Columns as tables' radio button is selected.
4. Click the 'Word Processor' button on the right to print the report to Microsoft Word.



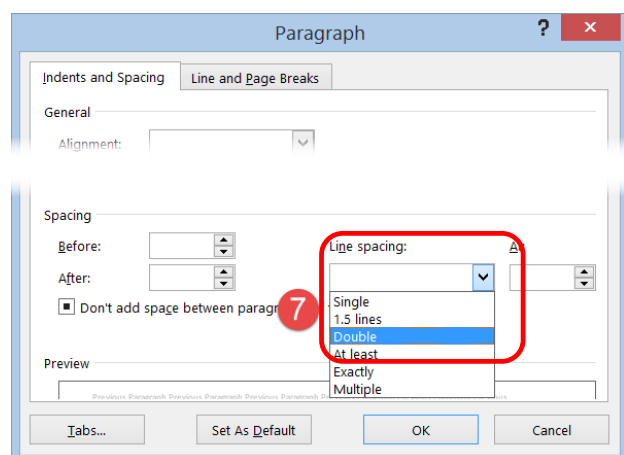
Word:

5. Once in Word, click anywhere in the report and select CTRL + A to select the entire document.
6. Then right-click and select 'Paragraph'.
7. Next, click on the 'Line spacing' option and select 'Double'. Then click 'OK'.



Now, the entire document is double-spaced, which should allow plenty of room to hand-write information.

All screen shots are from ARM 2015 and Word 2013.



Data Quality checking tools

ARM 2015 includes several **data quality tools** that are simple to use.

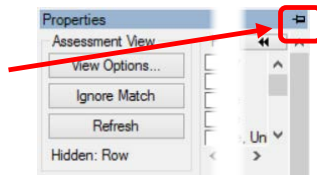
The Data Quality tools only display when a trial is open in ARM 2015.

In **Assessment Data**, use the Tools in the **Properties panel**, located along the right-side of the screen.

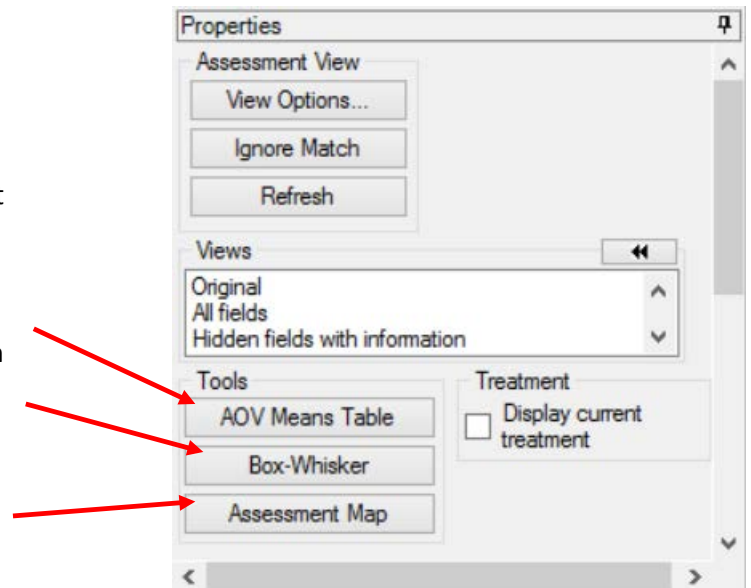
If the Properties panel is not already open, click on the 'Properties' tab located near the top right side of Assessment Data screen.



Then 'Pin' the tab by clicking on the 'pin' in the top right corner.



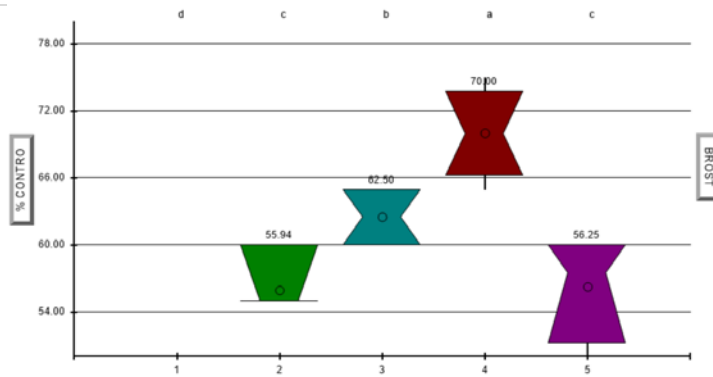
- AOV Means Table
 - Click to create an AOV Means Table based on current report options. Select File - Print Reports, then click on AOV Means Table report to display report options.
- Box-Whisker
 - Click to create a Box-Whisker graph of each data column.
- Assessment Map
 - Click 'Assessment Map' to display a trial map based on ratings for a single data column, sometimes called a 'heat map' because dark or light color zones indicate areas that may be influenced by site differences.



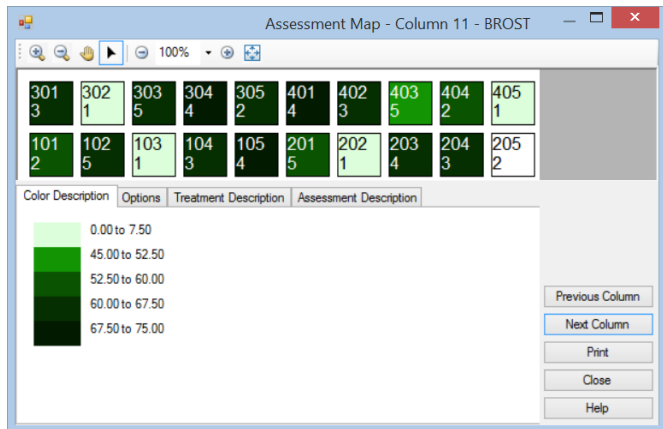
See next page for examples of each.

For **additional information** on how to interpret the Data Quality tools, please refer to **Help - References - Recommended Assessment Review Methods**.

Example Box-Whisker



Trial ID: G-A17_Herb_01

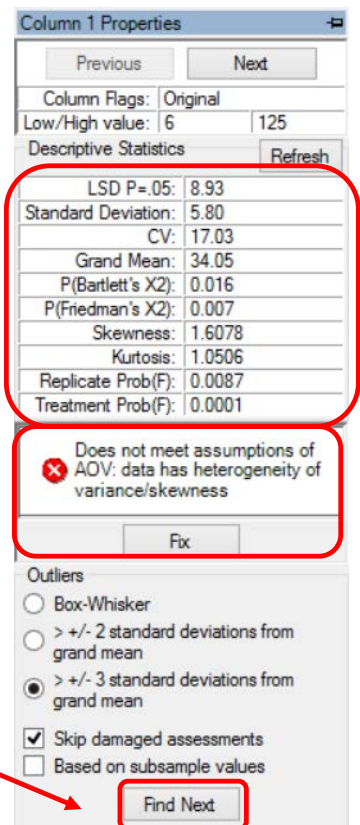
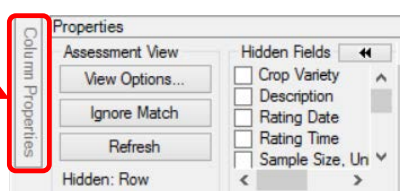


Determination of the efficacy and lowest effective dose weeds in Winter Rape when applied in Spring
 Title No. 2: Expanded title section
 Trial ID: G-A17_Herb_01 Location: Dijon, FRA T
 Protocol ID: G-A17_Herb Investigator: Rebecca Star
 Project ID: Dicamba Study Director: R.E. Cearch
 Sponsor Contact: ABC Industrie

Pest Code		BROST
Crop Code		BRSNW
Rating Type		CONTRO
Rating Unit		%
Rating Date		May-1-2014
ARM Action Codes		EC P
Trt Treatment	Rate	Appl
No. Name	Rate Unit	Code
1 Untreated Check		0.00
2 Banvel 720	72.5 oz ai/a A	55.69 b
3 FallowMaster	87.5 oz ai/a A	62.50 b
4 Marksman	73 oz ai/a A	70.00 a
5 Clarity	25 oz ai/a A	56.25 b
Potassium sulfate 0-0-50	180 lb/a A	
LSD P=.05 (% mean diff)		5.684 (10%)
Standard Deviation		3.486
CV		5.7
Bartlett's X2		0.932
P(Bartlett's X2)		0.818
Skewness		0.3085
Kurtosis		-0.2193
Minimum Replicates (power = 80)		2
Largest Mean Difference (% mean diff)		14.306 (23%)
Replicate F		1.733
Replicate Prob(F)		0.2373
Treatment F		12.971
Treatment Prob(F)		0.0019

Additional data quality checking tools in Assessment Data, 'Column Properties'.

To access the 'Column Properties', click on the 'Column Properties' tab located near the top right side of Assessment Data screen, next to the 'Properties' tab.

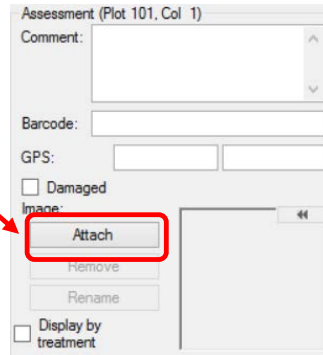


- Presents analysis of the current data column.
- Allows user to fix violations of AOV assumptions by selecting the 'Fix' button.
- Find statistical outliers - select the 'Find Next' button to locate each outlier.

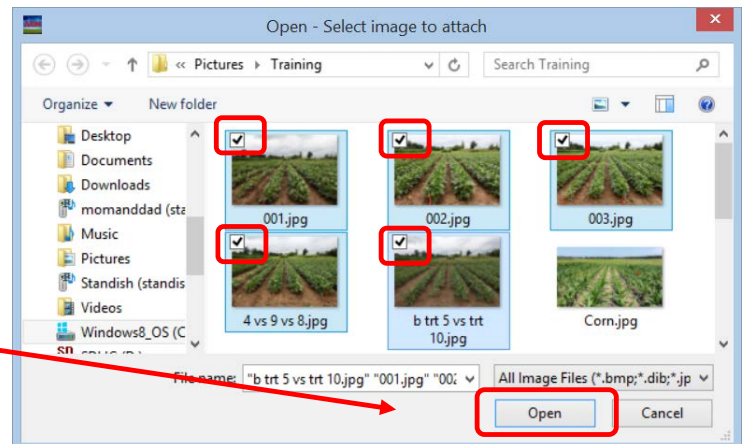
Attaching pictures in Assessment Data

One or more pictures can be attached to each assessment value grid cell in Assessment Data for a trial.

1. In the **Assessment Data** screen, click on the 'Attach' button near the bottom of the Properties panel.



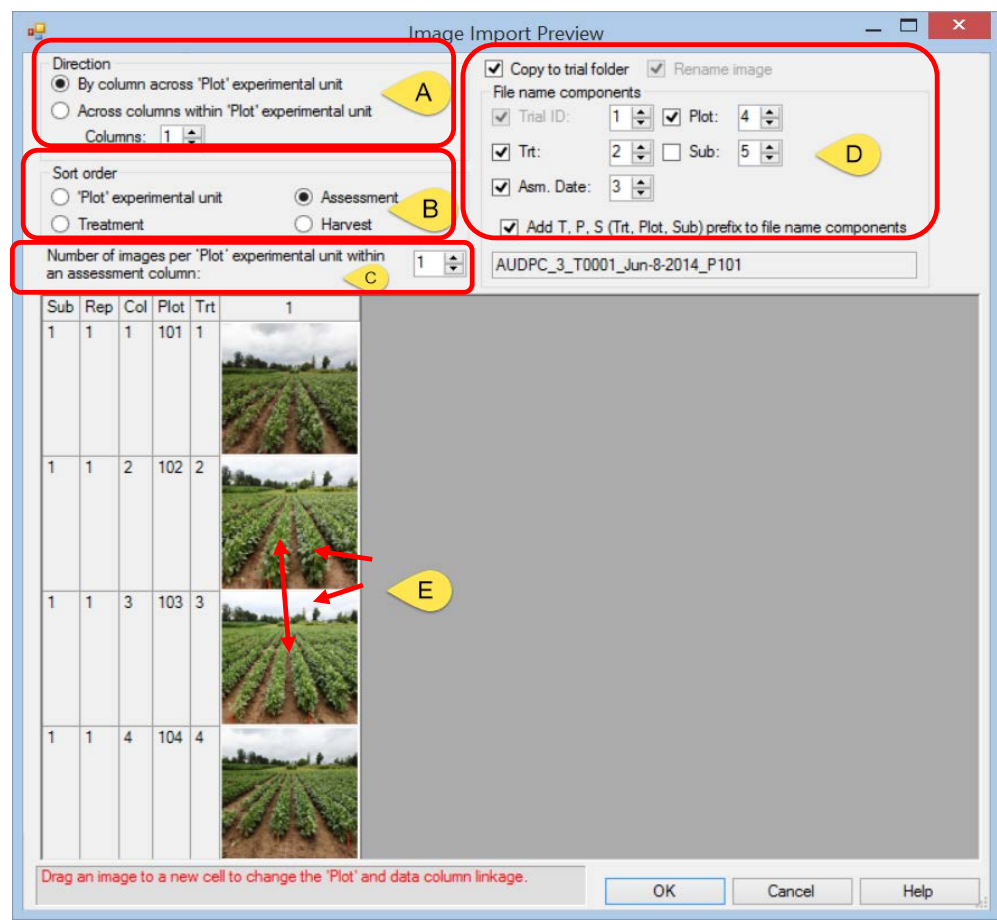
2. A window opens to select pictures to attach.
 - a. Select the drive and folder location where pictures are located.
 - b. Sort folder contents if necessary.
 - c. Select one or more pictures to attach.



3. Then click 'Open'.

The 'Image Import Preview' screen is displayed.

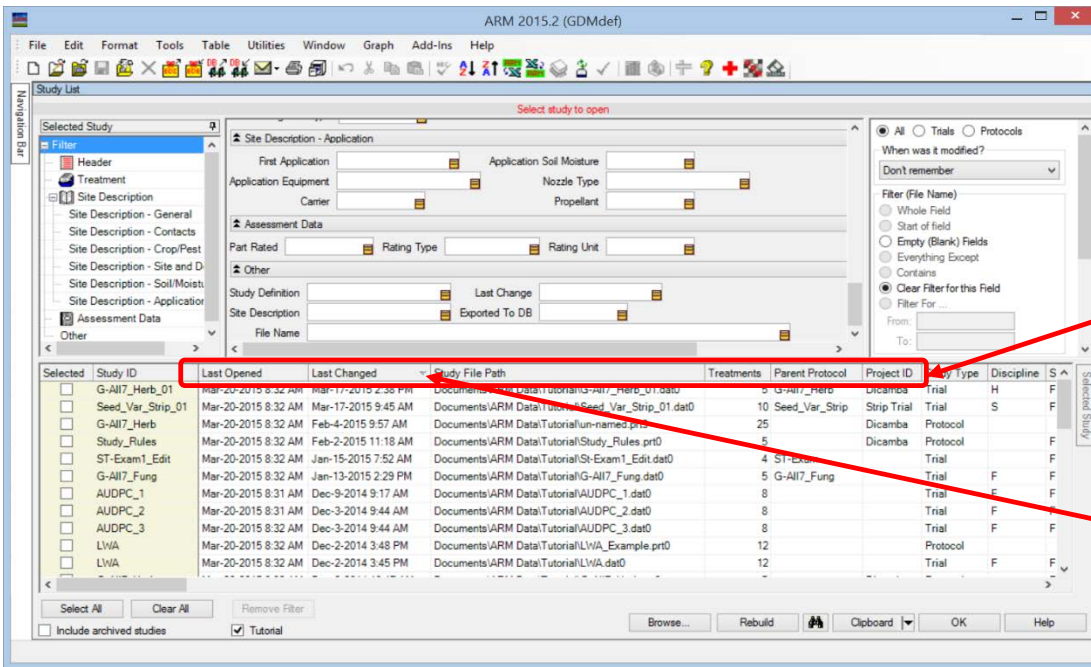
- a. Specify the **direction** multiple images are attached relative to the assessment data grid.
- b. Select the **arrangement** of the rows for importing images.
- c. To attach more than one image per plot, use this option.
- d. Define the way images are renamed when they are attached to a study.
- e. Drag and drop to change order of pictures attached as well.



Once all options have been selected, click OK to attach images.

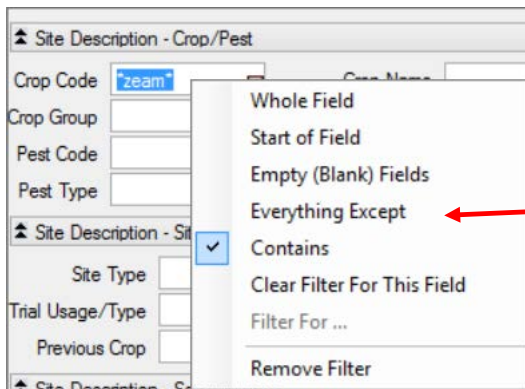
Use Study List to help with File Management

The Study List is a table summarizing information for each study and is highly **customizable** for individual needs.

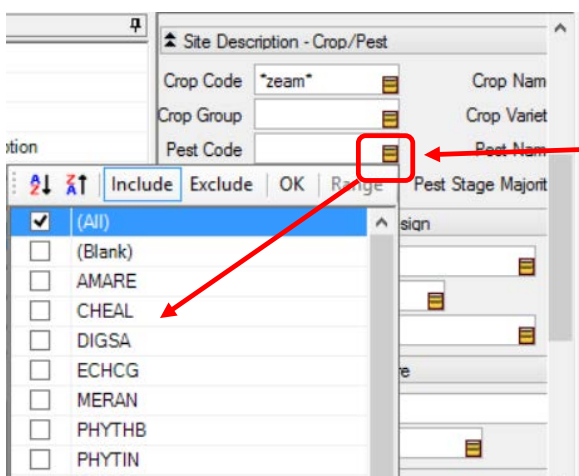


➤ Drag and drop column headers to move fields.

➤ Sort columns by clicking on column header. For example, sort by 'Last Changed' to keep recently edited files at top of list.



➤ Use right-click menu options to automatically filter by a specific field or clear a filter.

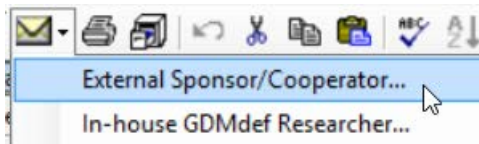


➤ Also filter by clicking on gold box for a unique filter list.

- Multi-select
- Include/Exclude

Use 'Send To' for exchanging data

Cooperator: Use **Send To – External Sponsor/Cooperator...** to send data to **Sponsor**.



- Ensures that the study is valid and required fields are completed.
- Creates an email to send **Sponsor** with files attached.
- **Sponsor** saves all files to their computer.
- ARM 'knows' to send **both ARM 9 and ARM 2015** study versions, plus include attachments such as pictures and additional files.

Meeting Calendar

GDM will be at the following meetings in the next few months. Visit our website for all the current information:

<http://gdmdata.com/Resources/Meeting%20Calendar>.

American Phytopathological Society (APS) August 1-5, 2015 in Pasadena, California.

- **GDM New ARM Features Workshop** August 1, 2015 from 1:00PM - 5:00PM.
 - Please register for free workshop on our website.
- ARM Trial Management for 2016, August 4, 2015, New Products & Services section, Section begins at 8:30am

American Society for Horticultural Science (ASHS) August 4-7, 2015 in New Orleans, Louisiana.

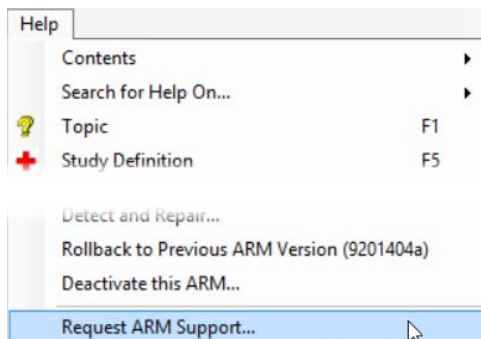
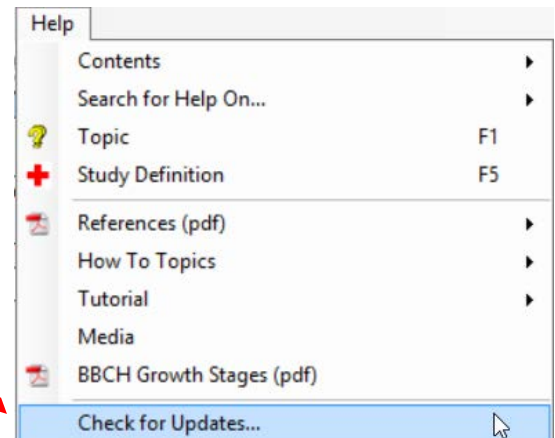
- Assessment Review Tools and Methods, August 6, 2015, Section begins at 1:45 in New Innovations in Commercial Horticulture Applications section.

International Plant Protection Congress (IPPC), August 24-27, 2015 in Berlin Germany.

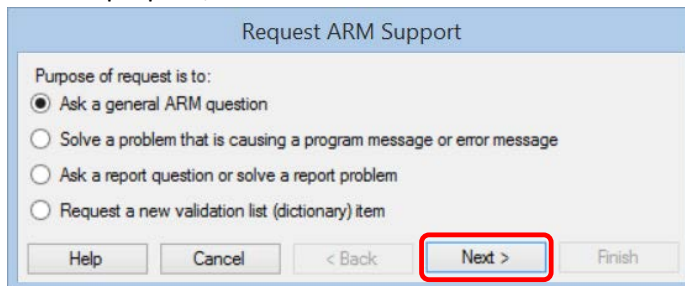
- Better Data Quality from Field Experiments using Electronic Data Capture in the Field, August 25 19:00-22:00 (7:00PM - 10:00PM), room K I.

Did you know?

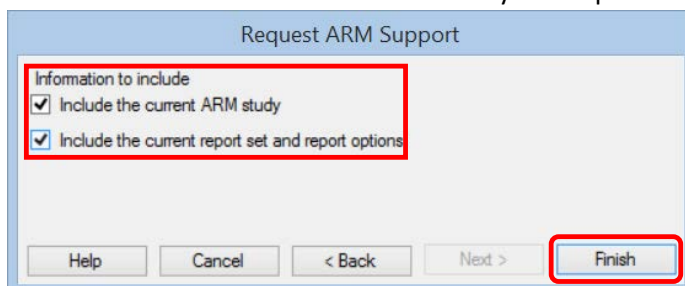
- Click **Help – Check for Updates** often to make sure ARM is the most recent version.
- Questions?
 1. Click **Help – Request ARM Support**.



2. Select a purpose, then click **Next**.



3. Check boxes to include current ARM study and report set option, then click **Finish**.



4. ARM will prepare an email with zip file attached.
5. **Write** an informative sentence or two about the **issue** you are having, what you expected to see, what you see and the steps you used to create.

6. Send the email.
 7. Our support staff will get back to you with follow-up questions if necessary to answer your issue.
-

Still time to upgrade to ARM 2015

There is still time to upgrade to ARM 2015. Upgrading ARM version 9 costs substantially less in 2015 than it will in 2016.

- Use the '[Write To Us](#)' link to request a current price list.
 - [Frequently Asked Questions](#) (FAQs) about ARM 2015 can be viewed on our website.
 - The [ARM 2015 Overview](#) explains many of the new features in ARM 2015.
 - The [Feature Comparison](#) chart illustrates the differences between the new ARM 2015 and older versions.
-

ARM 8 End of Support

ARM 8 support has ended. View our currently supported software versions and products policy:

<http://gdmdata.com/Support/Supported%20Products/>.
