

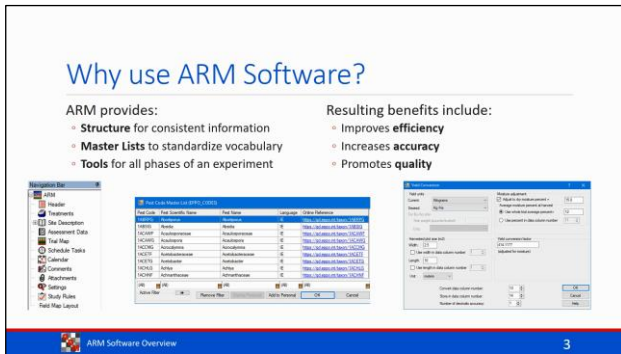
ARM Software Overview Script



Welcome to ARM, the software solution for managing agriculture research experiments.

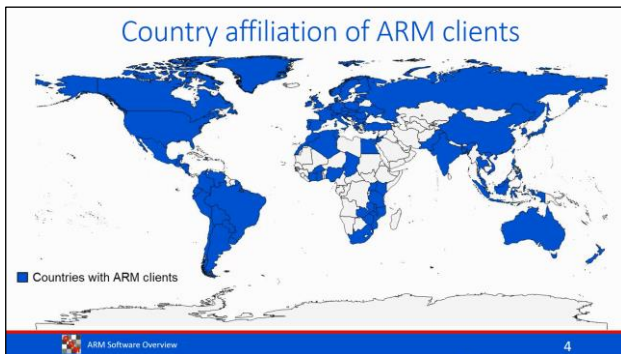


Use ARM for all stages of an experiment: to plan and create protocols, to randomize and manage trials, to analyze data and report the results.



ARM provides a defined structure to enter information consistently, with Master list dictionaries to standardize vocabulary, and has tools for every step of an experiment.

Using ARM improves efficiency, increases accuracy, and promotes better quality of results.

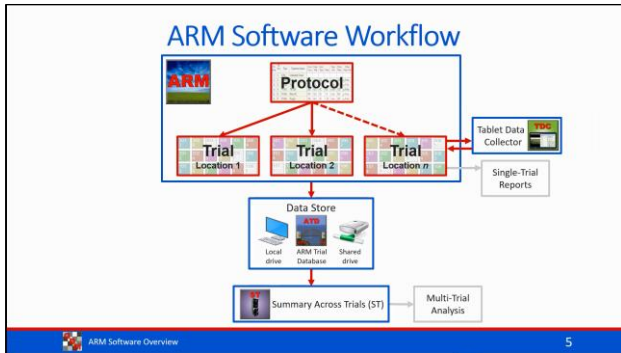


Thousands of researchers use ARM in nearly 100 countries across the world.

GDM Representatives offer local support in Europe, Africa, Asia, Australia, and North and South America.

Used by the largest global agro-chemical companies, ARM is the recognized and respected standard throughout the crop production and protection industry.

ARM Software Overview Script



It is important to note that the ARM workflow uses 2 types of data files.

A Protocol is the plan for an experiment.

Use a protocol to create Trials for each location or year of an experiment. Then enter assessments into each trial with Tablet Data Collector software while in the field, or by hand back in the office.

Tablet Data Collector runs the ARM software with additional features optimized for field data entry. It offers a touch number pad for data entry, and captures pictures and GPS coordinates at the trial or plot level.

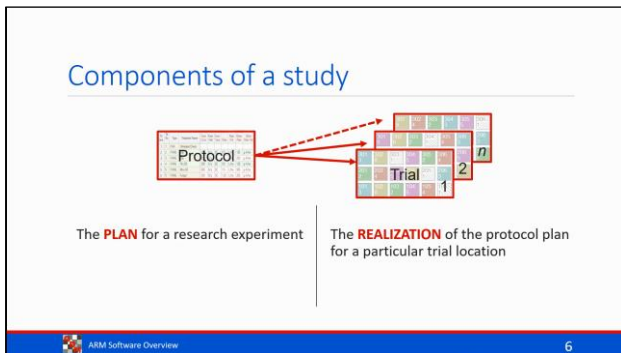
ARM generates a variety of single-trial reports. These include labels & signs, Spray & Seeding plans, Tour Reports and assessment analysis with treatment comparisons.

Next, trials can be saved and stored to a variety of locations. These include a local drive, an ATD database, or a shared network or cloud drive.

ARM Trial Database (also known as ATD) is a relational database to store and maintain trial information. Use ATD to manage large numbers of trials; create customized pivot tables, charts, and reports; and offer seamless multi-user access.

Summary Across Trials then reads stored trial information and performs multi-trial analysis. Researchers, product managers and information technology groups use ST to summarize a set of research trials. The results can be used to measure consistency of research results, to improve the design of future trials and provide critical information for product release and use.

Next, we take a closer look at ARM protocols and trials.



A study has two essential components.

The first component is a Protocol, the plan for an experiment. Essentially it is a "template" containing the design and instructions for trials.

The second component is a Trial, the realization of the plan. A trial is at one location, and is saved separate from the original protocol.

Multiple trials can be created from a single protocol when performing a series of trials.

ARM Software Overview Script

Protocol Components:

- **Treatments list**
- **Planned assessments**
- **Study rules**

Trial Components:

- Information from protocol
- Treatment **randomization**
- **Assessment data**
- Site Description
 - Application
 - Crop and Pest
 - Location

ARM Software Overview 7

A protocol consists of the Treatments to test, planned Assessments, and study rules to identify vital information to record.

A trial consists of key information from the protocol, the randomization of treatments, data from assessments, and a description of all site details. The site description includes applications, crops and pests, and the location description.

Sharing information

Send To

- Combines:
 - Protocol with attachments, or
 - Trial with assessment images, reports, and other attachments
- Validates study for missing or invalid information before sending
- Share through email, cloud storage

Outlook Dropbox

Data Export

- Converts trial information to preferred file types for additional analysis or graphing

X sas R

ARM Software Overview 8

ARM offers several ways to share information with other programs or people.

The Send To feature packages a protocol with attachments, or a trial with assessment images, attachments, and specified reports. Then ARM validates the study before sending to ensure that all required information is included. Lastly, the package is attached to an email message, for easy sharing.

The Data Export feature converts trial information to preferred file types to analyze or graph data using other programs.

Thank you!

Learn more about ARM software!

Watch video tutorials at
www.gdmdata.com/Resources/Video_Tutorials

Give ARM a try!

Request a FREE demo version
www.gdmdata.com/Support/Write_to_Us/#demo

Purchase ARM today!

Request a price list
www.gdmdata.com/Support/Write_to_Us/#request

ARM Software Overview 9

Thank you for your interest in ARM software!

Learn more about ARM! Watch video tutorials on our website.

Request a free trial version to experience ARM yourself.

Request a price list using the link provided, to purchase ARM.