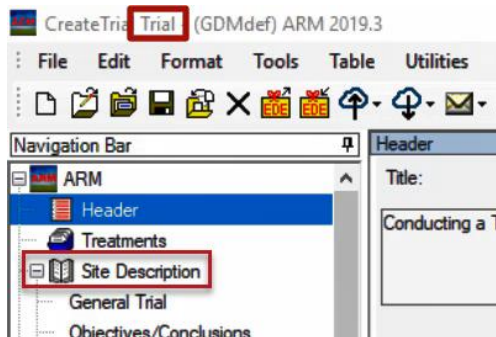
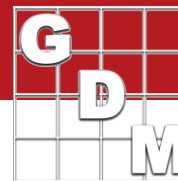


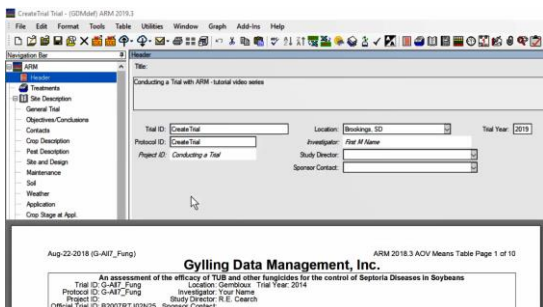
Components of a Trial



In this video, we introduce all of the components of an ARM trial. A general overview of each editor is given, describing its purpose and functionality.

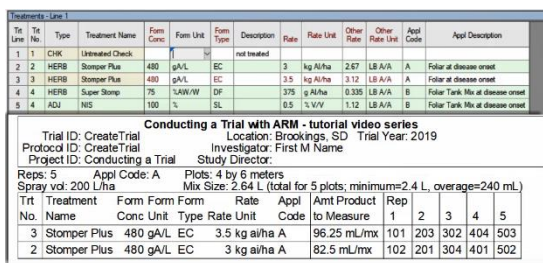
Let's begin in a trial we just created from a protocol. There are a couple of ways to see that a trial is opened:

The title bar contains the word "Trial", and in the Navigation bar, the *Site Description* is listed. (When in a protocol, the *Protocol Description* is listed instead.)



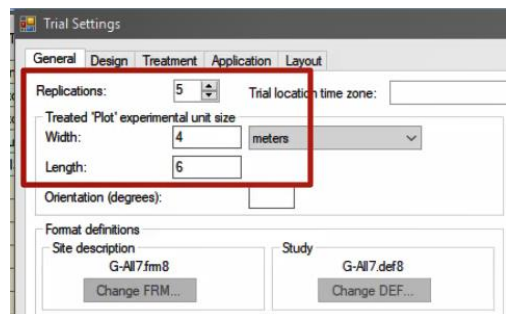
The first editor in the list is the Header. This contains the Title of the study, among other basic information about the study that will comprise the page heading for ARM reports.

This includes the Trial ID to identify the trial in the study list, and the Protocol ID to link all trials created from the same protocol.



The Treatments editor describes the treatment formulation and rates to be used in the study. Typically these are not edited in a trial, but changes can be made when necessary. Additional treatments may also be added if needed.

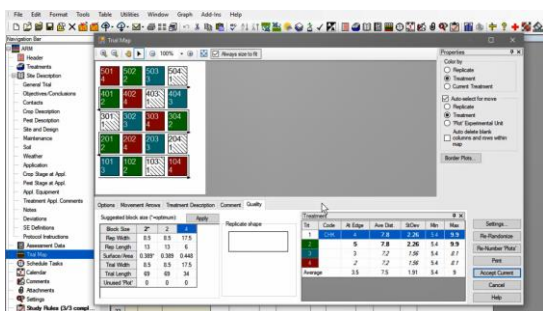
This information will be used on the Spray/Seeding Plan to calculate product amounts to measure for treatment applications.



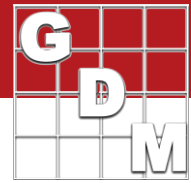
Next we skip down to the Settings dialog. This controls high-level aspects of the study, including the number of replicates and plot size,

treatment application settings, and the overall layout for the plot randomization.

If you received the ARM file from a sponsor, be sure to update these Settings for your trial setup.



Use the Trial Map to plan and document the treatment randomization for the trial. There are also tools for improving the quality of the randomization for improved precision.



Column Number	1	2	3
Pest Type	W Weed	W Weed	
Pest Code	AMAPA	AMAPA	
Pest Scientific Name	Amaranthus pal	Amaranthus pal	
Pest Name	Palmer amaranth	Palmer amaranth	
Crop Code		GLXMA	
BBCH Scale		BSOY	
Crop Scientific Name		Glycine max	
Crop Name		Soybean	
Description	% Control - 1 week Raw Grain Wgt		
Rating Date			
Part Rated	PLANT P	PLANT P	GRAIN C
Rating Type	COUPLA	CONTRO	WEIGHT
Rating Unit	PLANT	%	KG
Sample Size	1	PLC 1	PLC 1

	1	2	3	
1	1	1	101	3
1	1	2	102	2
1	1	3	103	1
1	1	4	104	4
1	2	1	201	2
1	2	2	202	4
1	2	3	203	3
1	2	4	204	1
1	3	3	301	1
1	3	2	302	3
1	3	3	303	4
1	3	4	304	2

Enter data for ratings taken from each plot in the Assessment Data editor. Each assessment rating is entered as a separate column.

The top half of this editor describes the rating – we saw this assessment data header in the protocol. Now there is a table for entering actual data values down below.

The Site Description editor contains several subsections (or tabs) to record trial site information. This includes:

- trial status and location,
- crop and pest details,
- weather and application information,
- and free-text entry of general observations and conclusions.

The Site Description contains many subsections (or tabs) to record trial site information. This includes:

The Schedule Tasks editor is used to plan and document tasks performed throughout the season. It allows users to create tasks for treatment applications, assessments, and other categories. Tasks can be scheduled on a particular date, or relative to a significant date in the trial.

The Schedule Tasks editor is used to plan and document tasks performed throughout the season.

Create a task for treatment applications, taking assessments, and several other categories.

They can be scheduled on a particular date, or relative to a significant date in the trial.

The Calendar then displays the defined tasks in a calendar view. The tasks can also be synced with an Outlook calendar.

The Calendar then displays the defined tasks in a calendar view. The tasks can also be synced with an Outlook calendar.

Link external files to an ARM study by using the Attachments editor.

Rule ID	Editor	Field	Condition	Columns/Tot Lines	Permissions	Owner ID
1	Required	Assessment Data	Rating Date	With assessment data	All	Everyone in my company
2	Required	Site Description	General Trial - Latitude of LL Corner	established		Everyone in my company
3	Required	Site Description	General Trial - Longitude of LL Corner	established		Everyone in my company

- Enforces requirements
 - Guides data entry
 - Provides "to-do" list at trial submission

Finally, Study Rules enforce requirements to ensure consistency of trial data. They guide data entry by making sure critical information is recorded at the right time, and provide a "to-do" list of items to fill in before completing or submitting the trial at the end of the season.