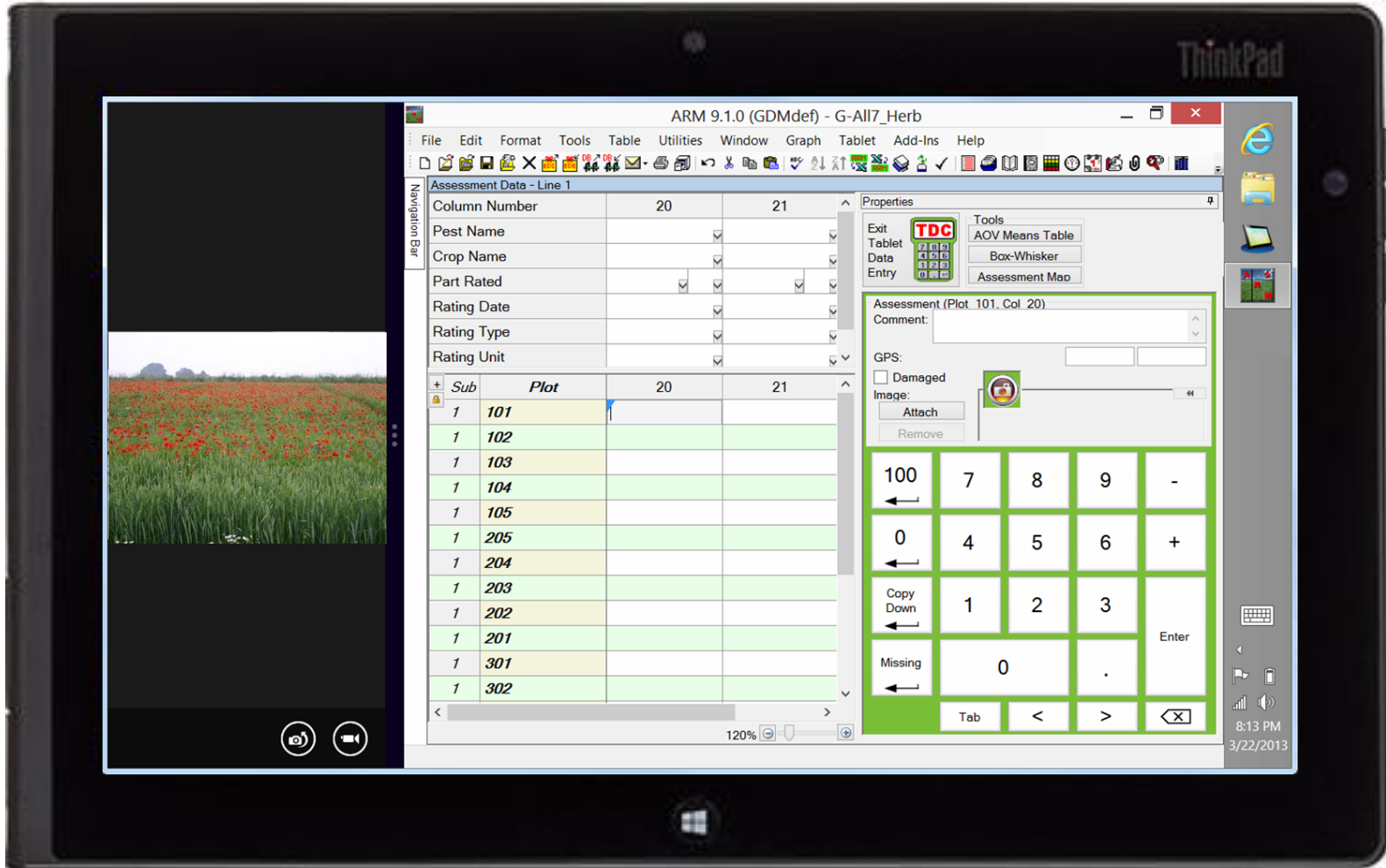


# ARM Tablet Data Collector

"TDC" is:  
ThinkPad  
or  
Panasonic  
Win 8 Pro  
tablet  
+  
ARM  
+  
special  
tablet &  
touch  
features

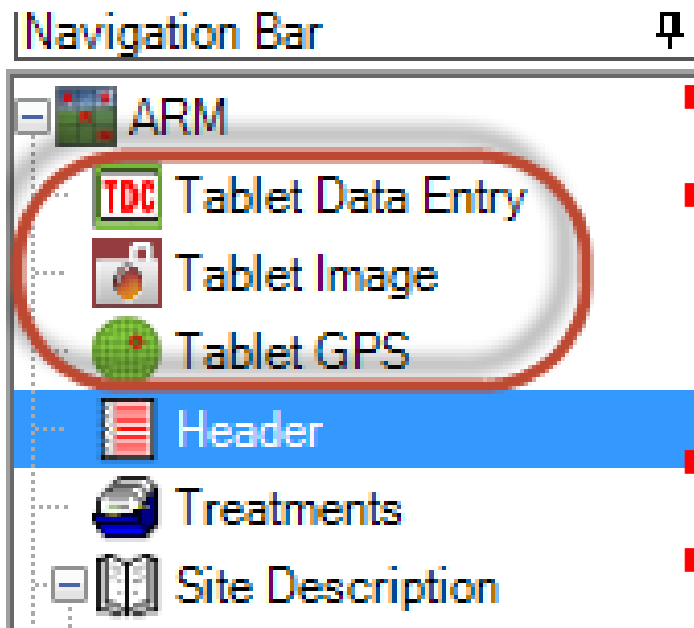
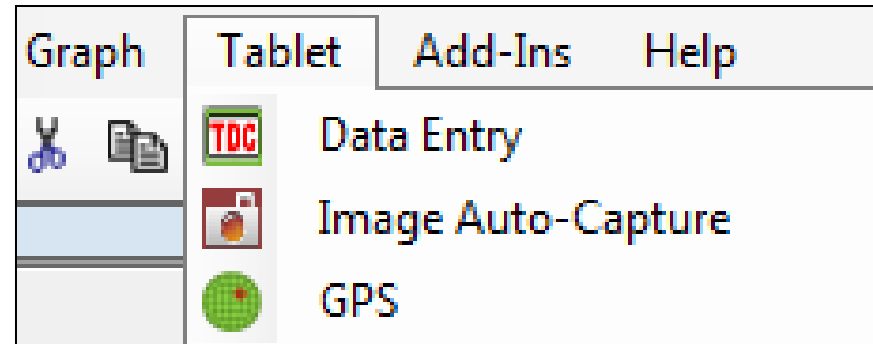


Steven R. Gylling, Ph.D.

Gylling Data Management, Inc.

# Special TDC Features

- Tablet Data Entry
- Tablet Image Capture
- Tablet GPS



- Eliminate transcription errors
- Improve data quality
  - Automatic value checking
  - Tools to immediately review data
- “Capture” trial photographs
- Link a note to any data point
- Optimized for touch
- In-field entry of all trial info.



# Tablet Data Entry

The screenshot shows a tablet data entry application interface. The main window is titled "Assessment Data - Line 1" and contains a table with columns for "Column Number", "Rating Date", "Rating Type", "Rating Unit", and "Number of Subsamples". The "Rating Unit" is set to "1-6ICR" and "Number of Subsamples" is "1". Below this is a table with columns "Sub" and "Plot", showing rows for "101", "102", and "103". To the right is a "Properties" panel with a "TDC" keypad, "Tools" (AOV Means Table, Box-Whisker, Assessment Map), and an "Image" capture section with a camera icon and "Attach" button. At the bottom is a large touch keypad with numeric keys (0-9, 100, 0, Copy Down, Missing, Tab, <, >, Enter, X) and a zoom control at the bottom center showing "150%". Red arrows point from the list items to the keypad, from the keypad to the "Attach" button, and from the zoom control to the list items.

- Optimized screen
- Start image capture
- Shortcut keys
- Touch keypad
- Zoom




# Tablet Data Review Tools

- Data analysis (AOV)
- Box-Whisker Graph
- Assessment Map

Properties

Exit  
Tablet  
Data  
Entry



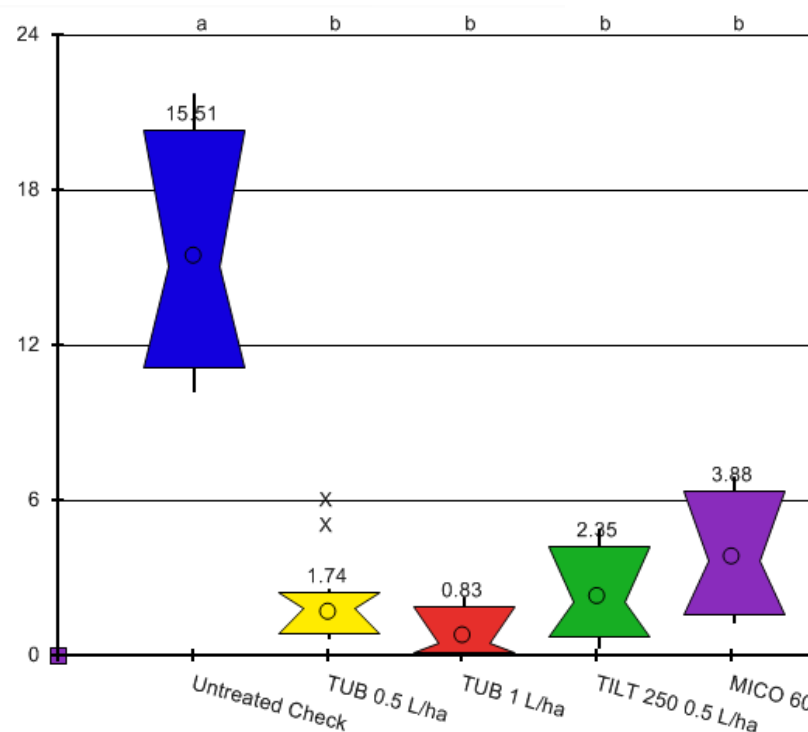
Tools

AOV Means Table

Box-Whisker

Assessment Map

Rating Type	COUINS APC	
ARM Action Codes	1	
Trt Treatment No. Name	Rate Rate Unit	
1 Untreated Check		106.3 a (0.0%)
2 Sure Kill NIS	250 g ai/ha 0.5 % v/v	13.5 bc (87.3%)
3 Super Stomp NIS	250 g ai/ha 0.5 % v/v	17.0 bc (84.0%)
4 Sure Kill NIS	375 g ai/ha 0.5 % v/v	9.5 c (91.1%)
5 Super Stomp NIS	375 g ai/ha 0.5 % v/v	24.0 b (77.4%)
LSD (P=.05)	8.93	
Standard Deviation	5.80	
CV	17.03	
Bartlett's X2	12.244	
P(Bartlett's X2)	0.016*	
Skewness	1.6078*	
Kurtosis	1.0506	
Replicate F	6.201	
Replicate Prob(F)	0.0087	
Treatment F	197.210	
Treatment Prob(F)	0.0001	



401 UTC	402 Tub1	403 Tub.5	404 Tilt	405 M+F
301 Tub1	302 Tub.5	303 UTC	304 M+F	305 Tilt
201 Tub.5	202 Tub1	203 M+F	204 Tilt	205 UTC
101 Tub1	102 UTC	103 Tilt	104 Tub.5	105 M+F

Color description

Options	Treatment Description
0.50 to 0.95	3.2 to 3.65
0.95 to 1.4	3.65 to 4.1
1.40 to 1.85	4.10 to 4.55
1.85 to 2.3	4.55 to 5.00
2.30 to 2.75	

# Tablet Image Auto-Capture

Take a picture. TDC “captures” the image, links it to the current plot, renames attached image as trial name + treatment # + date + plot #.

All of these actions occur automatically!

See in exhibit hall at GDM booth



The screenshot shows the 'Tablet Image Import Preview' window. It features several configuration sections: 'Direction' with radio buttons for 'By column across 'Plot' experimental unit' and 'Across columns within 'Plot' experimental unit' (selected), and a 'Columns' dropdown set to '2'; 'Sort order' with radio buttons for 'Plot' experimental unit, 'Assessment' (selected), and 'Harvest'; and 'Treatment' with radio buttons for 'Treatment' and 'Harvest'. There are also checkboxes for 'Copy to trial folder' and 'Rename image'. A 'File name convention' section includes checkboxes for 'Trial ID:', 'Trt:', and 'Plot:', with a text field containing 'G-All7\_Herb...'. A red instruction box says 'Drag an image to a new cell to change the 'Plot' and data column linkage.'. Below these settings is a table with columns 'Sub', 'Rp', 'Col', 'Plot', 'Trt', and two image columns. The first row shows a field with a landscape image, and the second row shows a field with a close-up of a red flower.

Sub	Rp	Col	Plot	Trt	20	21
1	1	1	101	4		
1	1	2	102	2		