

ARM Product Pulse

Your source for the latest ARM updates and best practices

Issue #24

ARM 2024.1 Features and Enhancements

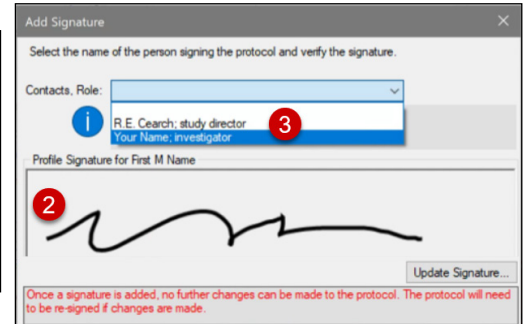
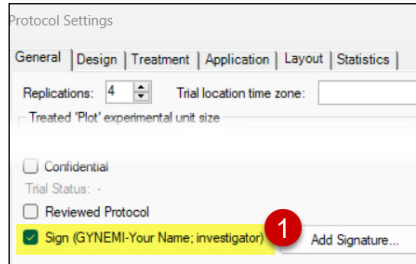
Run "Check for Updates" to take advantage of the latest developments! Find release notes on the [website](#).

Signature Feature

Added to protocol (previously only in trial).

1. Protocol Settings > Sign checkbox.
2. Create your signature in user profile.
3. Confirm your role in the protocol (pulls from Contacts).

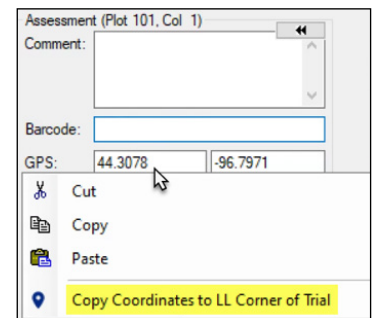
Check out [Utilizing Signatures](#) to learn more.



NEW! Copy Coordinates

Right-click to copy GPS coordinates to Latitude/Longitude of LL Corner fields in Site Description.

See it in action [here](#).



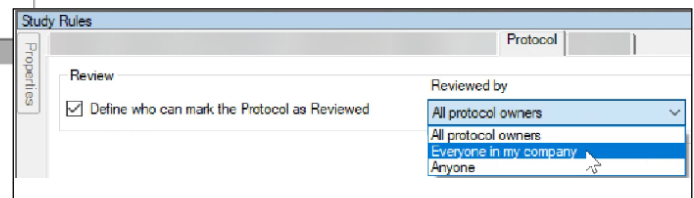
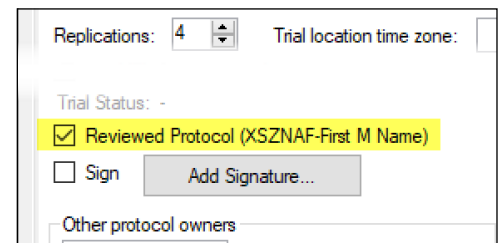
Updated: Reviewed Protocol

- Go to Settings > General Tab to mark a protocol as reviewed.
- Automatically clears when significant changes are made to the protocol (not cleared for Status or Trial Location changes).
- Documented in the read-only Notes section within Protocol Description.
 - Automatically logs every time someone reviews the protocol.

Notes

No.	Context	Date	By	Notes
1.	REVIEW	28 May 2024	First M Name	Automatically added by ARM: Protocol Reviewed

- Create a "review group" with Study Rules - define who can mark a protocol as Reviewed.
 - Note: does not *require* that Reviewed is checked.



Follow GDM Solutions on [LinkedIn](#) or [Facebook](#) for time-saving tips!

A few minutes a day will expand your ARM knowledge.



ARM Product Pulse

Your source for the latest ARM updates and best practices

NEW! Experimental Unit used throughout study file

- Defined "Experimental Unit" displayed throughout prompts in ARM.
- More intuitive for non-field experiments like orchard or greenhouse studies.

Number of Subsamples: **Tree**' experimental unit number for the current experimental unit

Sub	Rep	Blk	Col	Tree	Tit	1	2
1	1	1	1	101	2	100	
1	1	1	2	102	3	100	
1	1	1	3	103	1	0	

Site Description: Site and Design
 Treated Plot Width: 3
 Treated Plot Length: 12
 Replications: 4
 Site Type: []
 Experimental Unit: 1 TREE tree
 Study Design: RACOB1 Randomized Comp

View subsamples: By column
 Cursor order: By column across Tree
 Columns: 1
 Use color bands: By Tree' experimental unit
 Plain lines: 1 Colored lines: 0
 Load View Save View

NEW! Copy Assessment Editors

- New shortcut buttons to copy/paste entire header description.
 - Copy appears only in columns with header information.
 - Paste appears only in completely empty headers.

Column Number	1	2
Assessed By	Michelle Nelson	
Rating Date	May-31-2024	
Standard Evaluation (SE)		
- SE Name		
- SE Description	Pest Stand Count	
- Part Rated	PLANT P	
- Rating Type	COUPLA	
- Rating Unit	MROW	

Column 10 Diagnostics

Diagnostics

Include spatial models

Raw Graphs: Show... Layout: 4 X 2

Statistics (P)	Raw	IID	AL	AS	AA	AR
N	20	20	20	20	20	20
Unique	17	19	19	19	19	19
Analyzed	19	19	19	19	19	19
Missing	0	0	0	0	0	0

Recommendations

Basis: Assessment Values

AR Graphs: Show... Layout: 4 X 2

Code	Test Statistic	Value	Comment
1	AR Levene's	12.135	Homogeneity of variances not stabilized by availa
2	IID Shapiro-Wilk	0.992	Does not fail general test of normality of residuals
3	IID Skewness	0.03	Does not fail test of skewness of residuals
4	IID Kurtosis	-0.215	Does not fail test of excess kurtosis of residuals

Updated: Property Panels

- ARM remembers size and state of assessment panels:
 - when switching between editors
 - opening a different study file
 - closing ARM
- No more re-sizing Column Diagnostics for every trial that is reviewed!

GDM Representative Spotlight: Omar Posos-Parra

Our representatives provide training, sales, and technical support worldwide! Omar grew up using ARM alongside his parents. It was a natural fit for him to officially join our team back in 2020.

Omar serves Mexico, Costa Rica, Honduras, Puerto Rico, Guatemala, Chile, Peru, and Ecuador. Learn more about Omar [HERE](#).



Register for **FREE** training through our [ARM Academy!](#)
 Earn ARM Beginner Certification - great for new and veteran users!

