

ARM Product Pulse

Your source for the latest ARM updates and best practices

Issue #31

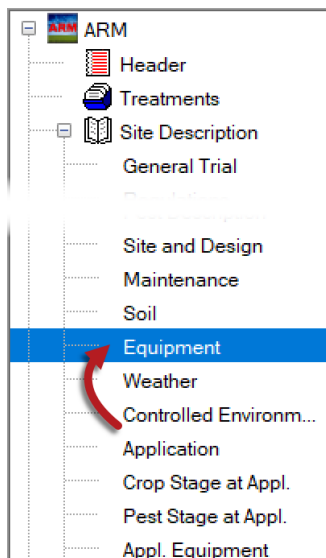
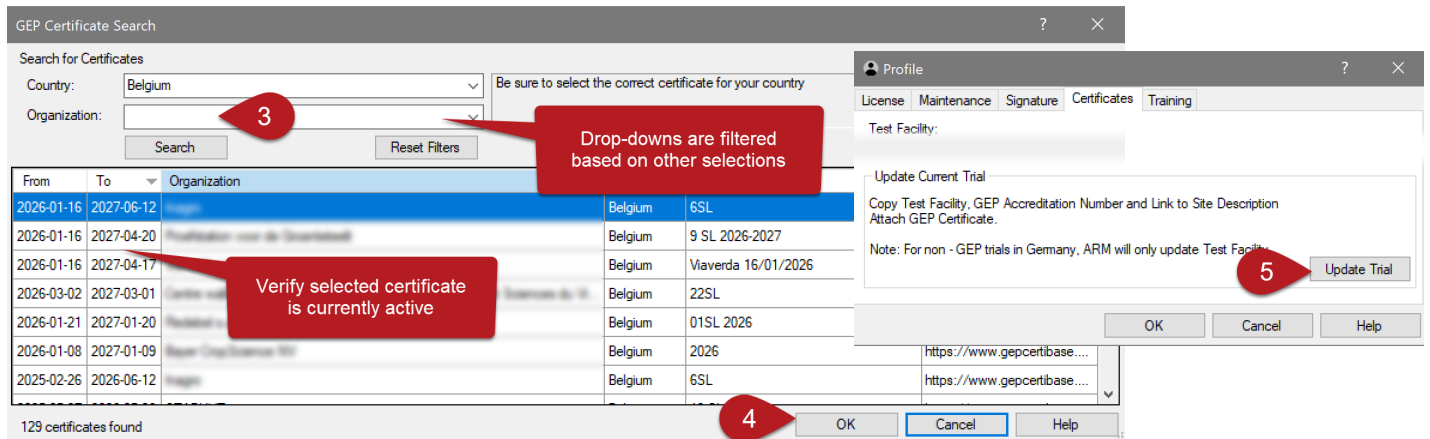
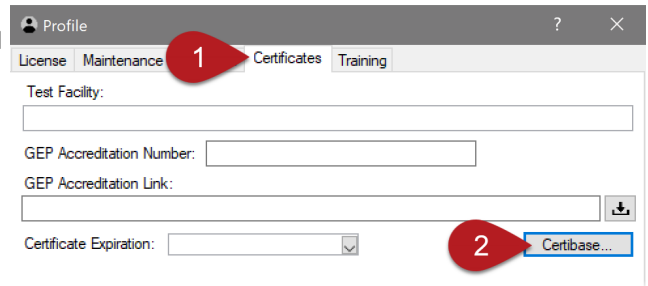
ARM 2026.0 Features and Enhancements

Run "Check for Updates" to take advantage of the latest developments! Find release notes on the [website](#).

UPDATED: Enhanced GEP Accreditation Certificate

Search the GEP Certificate Database System (Certibase) within ARM to populate GEP Accreditation details (test facility and certificate).

1. Select Help > Profile > Certificates tab.
2. Click on **Certibase** button.
3. Select Country and/or Organization and click Search.
4. Choose an active certificate and click OK to save to Profile.
5. Select Update Trial to copy selected certificate details to current trial.



UPDATED: Equipment tab

Find the Equipment tab in a new place on the Site Description list. Chronologically, equipment should be entered first (e.g. Weather station or growth chamber), then linked to the Weather and Controlled Environment sections.



Follow GDM Solutions on [LinkedIn](#) or [Facebook](#) for time-saving tips!

A few minutes a day will expand your ARM knowledge.



ARM Product Pulse

Your source for the latest ARM updates and best practices

ARM Mobile: Prepare for data collection season!

Use ARM Mobile on your iOS or Android device to take notes at the trial site. Follow these steps to prepare for data collection this year!

Ensure Favorite Lists are updated in ARM:

- In ARM, click the EDC button > Edit Mobile Lists.
- Only items saved to Favorites Lists are exported to ARM Mobile due to the large size of most validation lists.
- Provides a means of standardization to ensure consistency across dates, notetakers, and locations.
- Watch our [Edit Mobile Lists](#) tutorial video for full details.

Review Standard Evaluations (SEs):

- In ARM, choose from our master list or create your own.
- SEs are the fastest way to add assessments in ARM Mobile.
- SEs save time and improve data consistency!
- Watch our tutorial videos featuring [SEs](#).

Clear out last year's trials:

- Remove trials no longer needed from the app.
- Watch our [tutorial video](#) for step-by-step instructions.

Re-establish your cloud connection and update Base Information:

- In the app, go to Settings and Help > update folder paths for *Import Base Information* and *Export Location*.

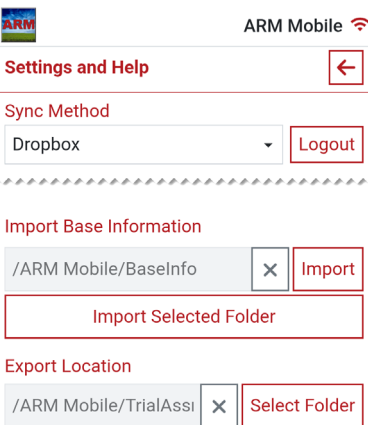
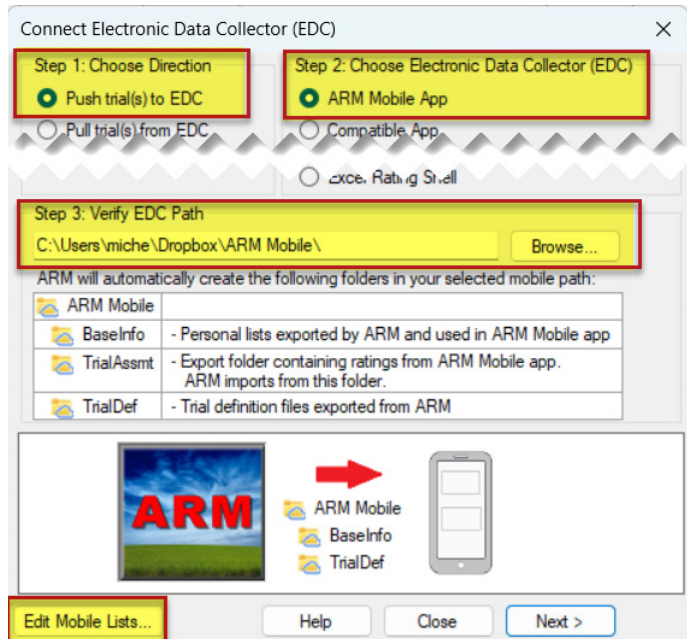
Prepare and send updated lists and trials to your mobile devices:

- Once trials are ready for data collection, push them to the ARM Mobile folder within your cloud storage service.
- In ARM, click EDC button > Push trial(s) to EDC > ARM Mobile App > Verify EDC Path.
- Watch our [Pushing Trials to ARM Mobile](#) tutorial video.



GDM Employee Spotlight: Chris Smith

Advancing agricultural research starts with the right tools—and the right people. At GDM Solutions, our team is dedicated to building ARM software that supports researchers across the globe. In this spotlight, meet one of the team members contributing to that mission every day. Chris started with GDM in 2009 and has been working behind the scenes to make meet our clients' needs ever since. Learn more about Chris [HERE](#).



Register for **FREE** training through our [ARM Academy!](#)
Earn ARM Beginner Certification - great for new and veteran users!

GDM Solutions, Inc. | PO Box 8452, Brookings, SD 57006
+1(605)692-4021 | www.gdmdata.com | support@gdmdata.com

