

# ARM Product Pulse

Your source for the latest ARM updates and best practices

Issue 2

## ARM 2018.5 Introduces Repeated Measures

### Analyze Repeated Assessments Across Time

ARM Version 2018.5 features a powerful statistical report which provides an analysis of treatment means over time to determine if there is an overall time effect on the treatments' performance.

### Where do you find it?

Select the "Repeated Measures" report located in File > Print Reports > Available Reports > Trial > Summary > Repeated Measures.

The screenshot shows the 'Print Reports' dialog box with 'Repeated Measures' selected under 'Summary'. Below it is the 'Assessment Data - Line 1' table with red callouts 1-6 pointing to specific columns. At the bottom is the 'Define Data Column Matches for Repeated Measures' dialog with red callouts 1-4 pointing to 'Matched Fields', 'Warnings', 'Previous column matches', and 'Selected column fields' respectively.

Column Number	1	2	3	4	5	6
Pest Type	Disease	Disease	Disease	Disease	Disease	Disease
Pest Code	ERYSGT	ERYSGT	ERYSGT	ERYSGT	ERYSGT	ERYSGT
Pest Name	Powdery mildew of whe	Powdery mildew of whe	Powdery mildew of whe	Powdery mildew of whe	Powdery mildew of whe	Powdery mildew of whe
Crop Code	TRZAW	TRZAW	TRZAW	TRZAW	TRZAW	TRZAW
Crop Name	Winter wheat	Winter wheat	Winter wheat	Winter wheat	Winter wheat	Winter wheat
Rating Date	Jun-8-2014	Jun-22-2014	Jul-5-2014	Jul-19-2014	Aug-3-2014	
Part Rated	PLANT P	PLANT P	PLANT P	PLANT P	PLANT P	PLANT P
Rating Type	COUDIS	COUDIS	COUDIS	COUDIS	COUDIS	
Rating Unit	PERCENT	PERCENT	PERCENT	PERCENT	PERCENT	AUDPC

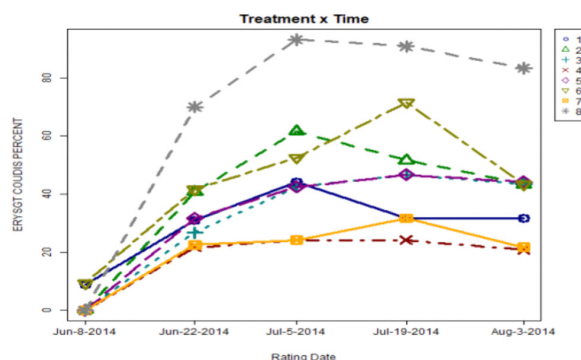
Heading	Matched Fields	Warnings	Previous column matches
Pest Code	ERYSGT	Selected assessments have inconsistent intervals of 14, 13, 14, 15 days.	Selected column fields
Crop Code		Instructions	1 Pest Code=SEPTTR; Rating Type=PESSEV; Rating Unit=%
Rating Date		Modify the matched columns by clicking a new column to match, selecting a previous	2 Pest Code=ERYSGT; Rating Type=COUDIS
Part Rated			3 Pest Code=ERYSGT; Rating Type=COUDIS

### How do you perform repeated measures analysis?

- (1) Select a column to find potential repeated assessments.
- (2) ARM proposes fields to match other columns.
- (3) Diagnose issues with column selection.
- (4) Or load from history of column matches.

### What analysis is included?

- Means and comparison letters for Treatments, Rating Dates, and Treatment x Rating Date interaction
- Repeated Measures AOV table
- Treatment x Time Graph to visually identify treatment interaction across assessment dates (pictured on the right)



For more information and details about all the new features available in ARM 2018.5 release visit: [gdmdata.com/Products/ARM/Updates/Release Notes/ARM 2018/#2018.5](http://gdmdata.com/Products/ARM/Updates/Release Notes/ARM 2018/#2018.5)



## Have you Updated to the Latest ARM Version?

When you close ARM, you will notice a "Check for Updates" window. It is important to run those updates to get the latest features and most current version of ARM. Please visit [gdmdata.com/Products/ARM/Updates/Release Notes](http://gdmdata.com/Products/ARM/Updates/Release Notes) for release notes.



# ARM Product Pulse

Your source for the latest ARM updates and best practices

Issue 2

## Fast Set Up: Copy Other Studies Using Merge

ARM offers you the opportunity to merge information from another ARM study. Instead of using “Save As” to duplicate a study, merging is a great alternative to give you more control and consistency. This feature saves you time and improves efficiency as you select what you want to copy.

### What Can You Merge

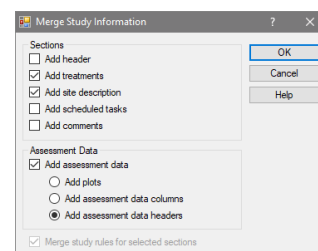
♦ Last Year’s List of Crops ♦ Treatments ♦ Site Info ♦ Assessment Descriptions ♦ Tasks

### Ways to Use Merge:

1. Copy site information to multiple trials from this season
2. Copy information from last year’s study

### Steps to Merge:

1. Open the study to copy information into
2. Select Tools > Merge > From ARM Study
3. Choose study containing the information to copy, also known as the “master”
4. Select which pieces of the “master” study you want to copy into the new study



## Are You Protecting Your Data?

The ARM backup feature protects your data from hard drive failure or file corruption, by saving a history of each ARM file to a separate drive. ARM will keep a file history allowing you to access previous versions of the file.

In this video, we discuss what to use for a backup device, and demonstrate how to back up and restore files in ARM.

Check out: [www.gdmdata.com/Resources/Video-Tutorials/Back-up-and-Restore-ARM-Files](http://www.gdmdata.com/Resources/Video-Tutorials/Back-up-and-Restore-ARM-Files)



## Client Care: ARM Training

Did you know that ARM offers multiple options to help you with questions and training? Please visit [www.gdmdata.com/Support](http://www.gdmdata.com/Support) for a list of tutorials and help topics!

Gylling Data Management 405 Martin Blvd. Brookings, SD, USA 57006  
+1(605)692-4021 [www.gdmdata.com](http://www.gdmdata.com) [support@gdmdata.com](mailto:support@gdmdata.com)

