

ARM Product Pulse

Your source for the latest ARM updates and best practices

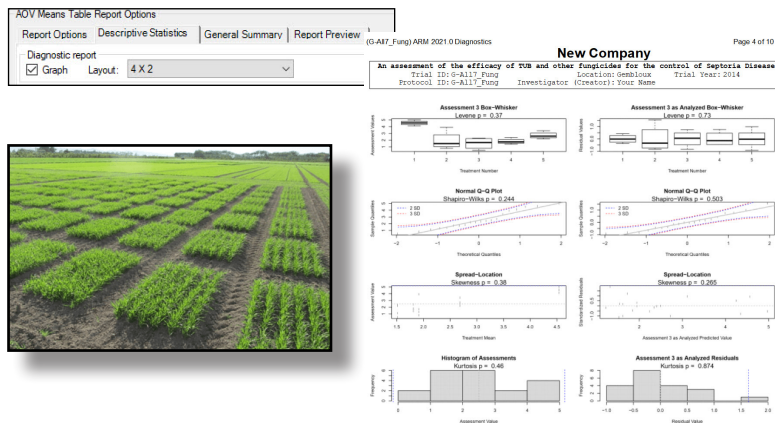
Issue #11

NEW ARM 2021.0 Reporting and Subsample Data Enhancements

Run your "Check for Updates" to take advantage of our latest developments.

Highlights include:

Bring Analysis from Column Diagnostics into your Reports



Default option to report Skewness, Kurtosis and Levene's using "residuals" for the AOV report, consistent with Column Diagnostics panel review

The screenshot shows the 'Descriptive Statistics' tab with 'Normality tests' selected. The 'Calculate normality tests from:' section has 'Residuals' selected. The 'Skewness' checkbox is checked. The 'Kurtosis' checkbox is checked. The 'Homogeneity of variance test' is set to 'Levene's'.

Subsample Data Transformations

Automatic transformations (AS, AA, AL) applied to plot means.

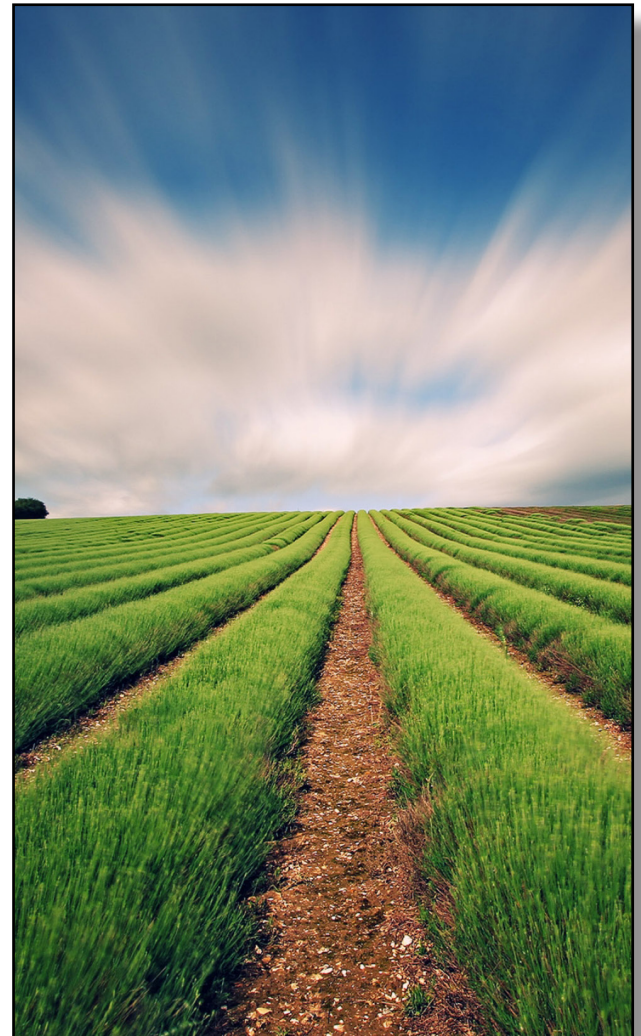
Previously these were applied to individual subsample values and then averaged.

Part Rated	LEAF3	P
Rating Type	PESSEY	%
Rating Unit	10	LEAF
Sample Size	10	
Number of Subsamples	10	
ARM Action Codes	&AS	
Trt Treatment	Rate Appl	3
No. Name	Rate Unit	&AS
1 Untreated Check	ABC	2.25 a
2 Tub	0.5 L/ha ABC	1.52 b
3 Tub	1 L/ha ABC	1.40 b
4 Tilt 250	0.5 L/ha ABC	1.52 b
5 Mico 60 Fungol	1.25 L/ha AB	1.78 b
LSD P=.05		0.398
Standard Deviation		0.258
CV		15.25

&=Transformation applied to 'Plot' experimental unit means of subsamples

ARM performs these industry-standard transformations to be consistent with the AOV analysis of plot means, not subsample values.

For a refresher course on Column Diagnostics, check out our training video [HERE](#)



ARM Product Pulse

Your source for the latest ARM updates and best practices




NEW Time Savings Features with ARM 2021.0



It is our goal to ensure that ARM works accurately and efficiently. Our latest developments will take less steps and time to get the job done!


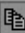



New Shortcut Button: Hide Details of Contact

Role: FALDOW farmer/landowner
Contact Name 5: Matt Elsinger
Organization: GDM Solutions
Country: USA United States

Hide all details of a contact in the study. Simply select the icon  to prevent the details from appearing, eliminating 19 steps of manually adding Study Rules.

New Shortcut Buttons: Movement Order and Trial Map

This is a quick way to sort your plots for data entry. Click the notepad button  to sort by your Assessment Order. To sort by your Harvest Order, select the harvester button . The Trial Map button opens a table to configure these custom orders.

	Sub	Rep	Blk	Col	Plot	Trt	1
	1	1	1	1	101	3	0
	1	1	1	2	102	1	0
	1	1	1	3	103	2	0
	1	1	1	4	104	4	0
	1	2	2	1	201	4	0
	1	2	2	2	202	2	0

NEW Webinar Trainings

Join us on hour-long training sessions on a variety topics. Sign up [HERE](#)

ARM Primer: 2021



Prepare for the upcoming research season with ARM webinars! This series focuses on starting the year off on the right foot with ARM. With shortcuts, new features, and maybe new-to-you capabilities, there's something for ARM users of all experience levels.



Quick Tip: Edit the Randomization with Excel

Set or modify the trial randomization with Excel. Include a column of plot numbers and treatment numbers with or without data, and paste into an empty ARM column.

This is an easy way to edit your randomization!
For complete steps check out our short tutorial: [HERE](#)

